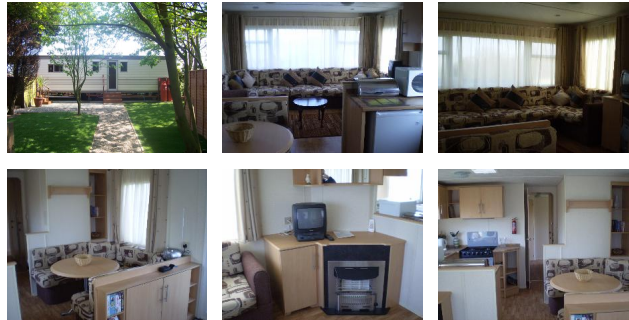


Caravan location: East England/Walnut Farm - 6 berth



Caravan description:

Walnut Farm is located in Waxham Norfolk in an area of outstanding natural beauty. The static caravan is sited in a picturesque location surrounded by farmland and trees. It has its own small garden and decking area with barbecue. The caravan has 3 bedrooms, 1 with a double bed, 1 with twin singles, and 1 with a small single and space for a travel cot and can accommodate up to 7 people by making up the double bed in the lounge area. It has a WC and shower, a fully equipped kitchen, microwave, fridge with freeze box, and gas fire. The caravan comes equipped with a TV/video and radio. We are open all round, 1 week bookings only in the summer but shorter 3 or 4 night breaks are available out of the main season. For more details click on the link below. ... more information online

Contact details:

Caravan owner:	Jerry Barden	Home tel:	01692 598217
		Mobile tel:	07879 692567
		Work tel:	

Caravan facilities:

- Berth 6
- Television ✓
- Disabled access
- Dish washer
- Bedding / towels
- Freeview
- Non family groups
- Washing machine
- Smoking
- DVD player
- Shower ✓
- Double glazing
- Pets ✓
- Microwave ✓
- Bath
- Central heating

Park facilities:

- Pub
- Clubhouse
- Restaurant
- Take away
- Fishing ✓
- Golf
- Tennis
- Mini-golf
- Laundrette
- Amusements
- Shops
- Sports field
- Indoor pool
- Outdoor pool
- Adult entertainment
- Childrens entertainment